



**DURABLE & COST  
EFFECTIVE**



**BUILT FOR INDUSTRY**



**PORTABLE & EASY TO  
TRANSPORT**



**AUSTRALIAN DESIGNED  
& ENGINEERED**

## PRODUCT SPECIFICATIONS

### GENERAL

Model	Area Light - GP360L
Lumen Output	245,000/208,000 with diffuser
Mast Height	14.8 Feet
Mast Type	Cable
Lights	4 x 300w LED Modules
Coverage	42,978 feet <sup>2</sup> at 5 lux

### POWER

Voltage	48V DC / 240V 10A AC input
Wattage	1440W DC / 1680W AC

### OPERATIONAL DATA

Wind Rating	62.1 mph
Working Temperature	32° to 122°F
Lifting	Fork pocket and lifting lugs

### UNIT INFORMATION

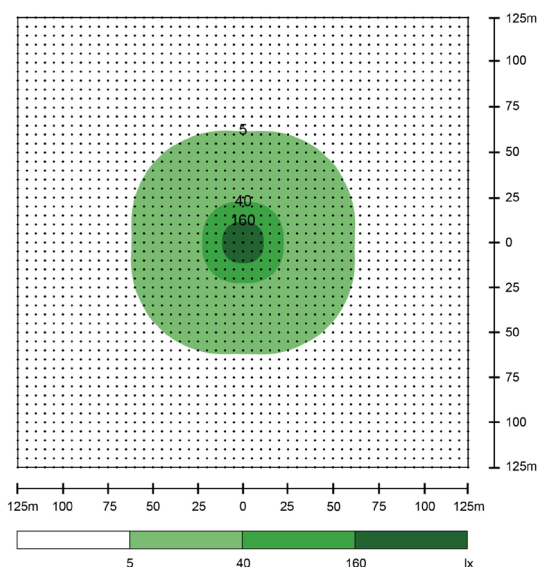
Dimensions (Stowed)	39.4" x 39.4" x 78.7" (LxWxH)
Dimensions (Deployed)	39.4" x 39.4" x 200.8" (LxWxH)
Weight	1763lbs

### FEATURES

- Timer
- Day/Night Sensor
- Fork pockets
- Lifting lugs



With Diffuser



Without Diffuser

