

# LIGHTING TOWER GP360L AREA LIGHT



DURABLE & COST  
EFFECTIVE



BUILT FOR INDUSTRY



PORTABLE & EASY TO  
TRANSPORT



AUSTRALIAN DESIGNED  
& ENGINEERED

## PRODUCT SPECIFICATIONS

### GENERAL

Model	GP360L - Area Light
Lumen Output	245,000/208,000 with diffuser
Mast Height	15 feet
Mast Type	Cable
Lights	4 x 300w LED Modules
Coverage	141,007ft <sup>2</sup> at 5 lux

### POWER

Voltage	48V DC / 120V 30A AC input
Wattage	1440W DC / 1680W AC

### OPERATIONAL DATA

Wind Rating	62mph
Working Temperature	32° to 122°F
Lifting	Fork pocket and lifting lugs

### UNIT INFORMATION

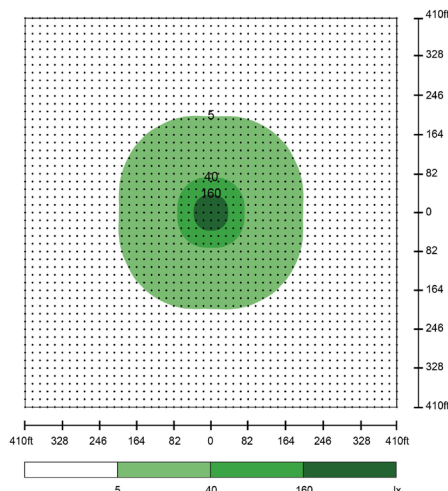
Dimensions (Stowed)	40" x 40" x 79" (LxWxH)
Dimensions (Deployed)	40" x 40" x 201" (LxWxH)
Weight	1763lbs

### FEATURES

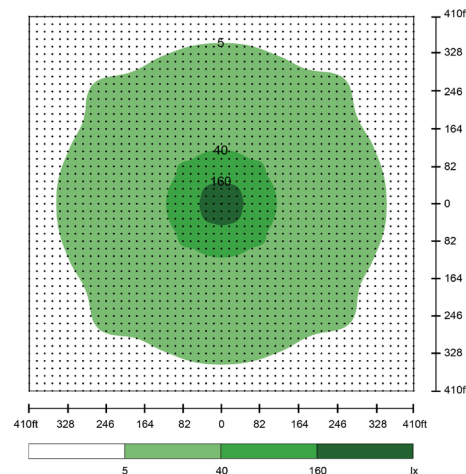
- Timer
- Day/Night Sensor
- Fork pockets
- Lifting lugs



With Diffuser



Without Diffuser



GPUSA-GP360L-V3-1125